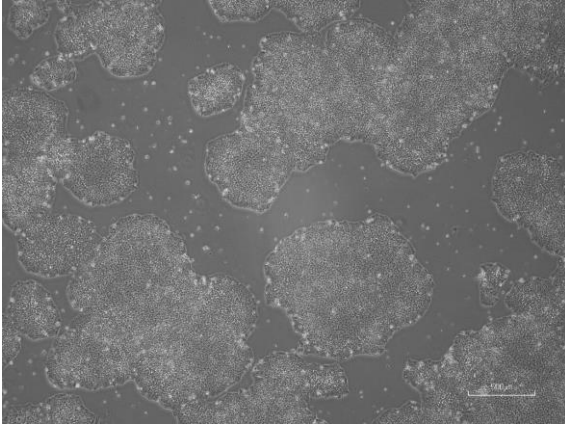
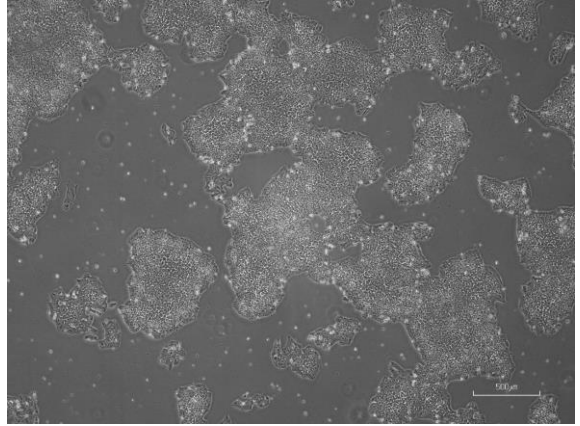


【 CiRA-jk-0122 】 Morphology of iPSC colonies

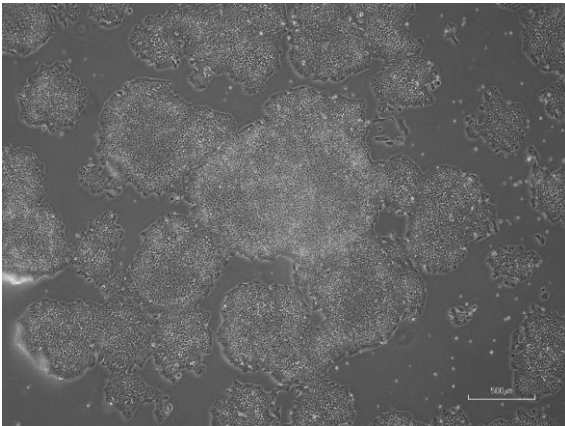
CiRA-jk-0122-A: passage-3



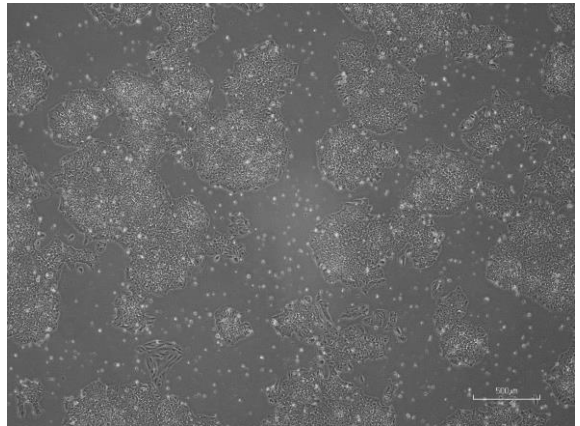
CiRA -jk-0122-B: passage-3



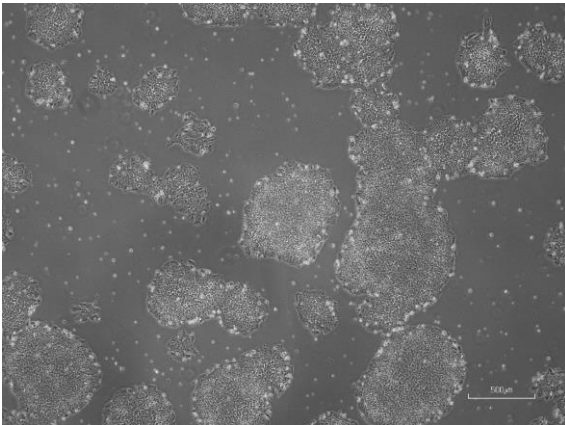
CiRA -jk-0122-C: passage-3



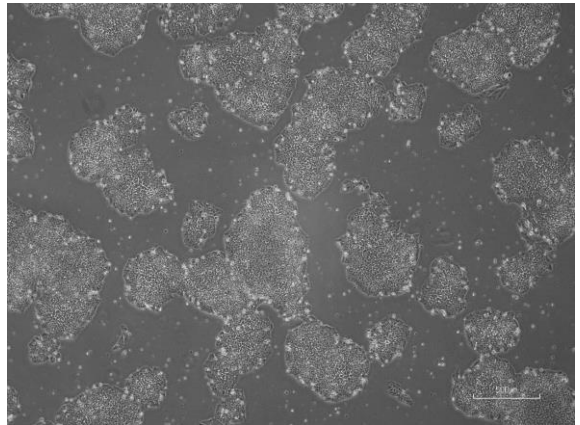
CiRA -jk-0122-D: passage-3



CiRA -jk-0122-E: passage-3



CiRA -jk-0122-F: passage-3



(All images were captured at 4x magnification)